



Honey Floral Source Library

Compiled by Amina Harris, Director
Honey and Pollination Center



Acacia – Black Locust

Italy

Robinia pseudoacacia



This honey isn't acacia at all. It is Black Locust, a native to North America. It has been widely and successfully introduced throughout the US, Europe and elsewhere.



Alfalfa

Nevada

Medicago sativa



Honey bee's don't like to forage in alfalfa fields where they get hit on the head by flower parts. Alfalfa's native U.S. pollinators are the alkali or leafcutter bees. Alfalfa is grown primarily as feed for cattle throughout the world.



Aroeira

Brazilian Pepper Plant

Brazil

Schinus terebinthifolia



Aroeira is native to Brazil but has been introduced in both Hawaii, Florida and elsewhere. Christmasberry, a common name, is so prolific, it is often considered invasive.



Avocado

Mexico

Persea americana



Most Avocado Honey is produced in Mexico though some is from Southern California and Florida. Botanically Avocado is a large berry with a single seed. The avocado originated in Peru.



Basswood

Minnesota

Tilia americana



Basswood is native to the Northeast and Midwest United States. There are varieties that grow throughout Europe. It has a variety of names including Linden, Lime and Tilia.



Blackberry

Oregon

Rubus armeniacus



Blackberries grow rampant all over the country, often along roadsides. Though there is good Blackberry Honey from California, the purer varieties tend to come from Oregon and British Columbia where few other flowers bloom at the same time.



Blueberry

Quebec

Vaccinium sect. *Cyanococcus*



Wonderful blueberries, native to North America are now grown throughout the continent.

Though honey bees are used to pollinate blueberries, their native pollinators use buzz pollination. The bee pictured above is a Southeastern Blueberry Bee.



Cultivated Buckwheat

Washington

Fagopyrum esculentum



Despite the name, buckwheat is not related to wheat. It is related to sorrel, knotweed and rhubarb. It is grown as a cover crop and for its grain-like seeds. The cultivation of buckwheat grain declined sharply in the 20th century as nitrogen fertilizer came into greater use. It is grown throughout the US, Canada and much of the world.



Wild Buckwheat

Central and Southern California

Eriogonum fasciculatum



From Pussy Paws that dot hiking trails throughout California to shrubs planted, this California native is now planted in drought resistant and native habitat gardens. The name 'Wild Buckwheat' is misleading.



Chicory

Oregon

Cichorium intybus



Belgian Endive is a type of chicory!
Chicory grows everywhere.



Corbezzolo: Strawberry Tree

Italy

Arbutus Unedo



Though the bitter honey from Sardinia is the most prized, Corbezzolo/Strawberry Tree is also found in Spain France Greece, Croatia and Hungary.



Coriander

Yuba City, Northern California

Coriandrum sativum L.



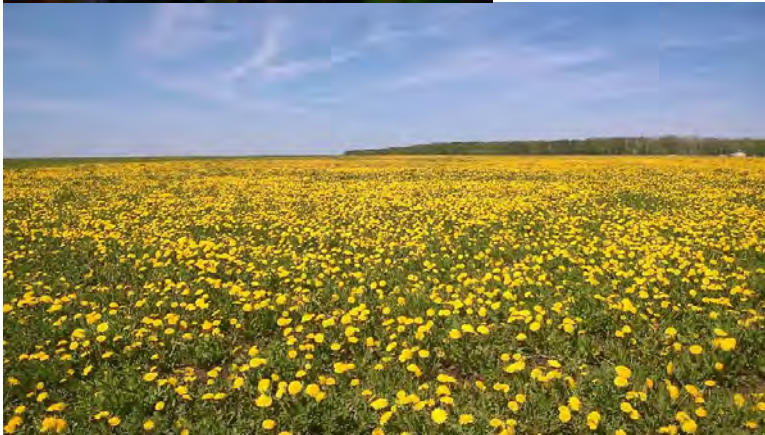
Grown as a seed crop in Northern California, coriander honey is also collected in Romania and Italy



Dandelion

Quebec

Taraxacum officinale



Dandelions, native to Eurasia, we brought to North America on the Mayflower for use as a medicinal plant. They have been used as both a food and medicine for thousands of years in China, Egypt, Persia and, eventually by Native Americans.



Eucalyptus

Bay Area California; Spain, Brazil, Madagascar, Australia

Eucalyptus Tereticornis



Eucalyptus is native to Australia where stores feature 20 or more varieties of eucalyptus honey! Eucalyptus is now found in most Mediterranean climate countries.



Fireweed

Oregon

Chamerion angustifolium



A rare honey that is non-crystallizing. The flowers are the first to grow and bloom after forest wildfires when new tracts of land become open to the sky. Fireweed is found throughout western North America. Honey is produced where it is abundant in British Columbia, Alaska and Oregon.



Heather

Southern France

Calluna Vulgaris



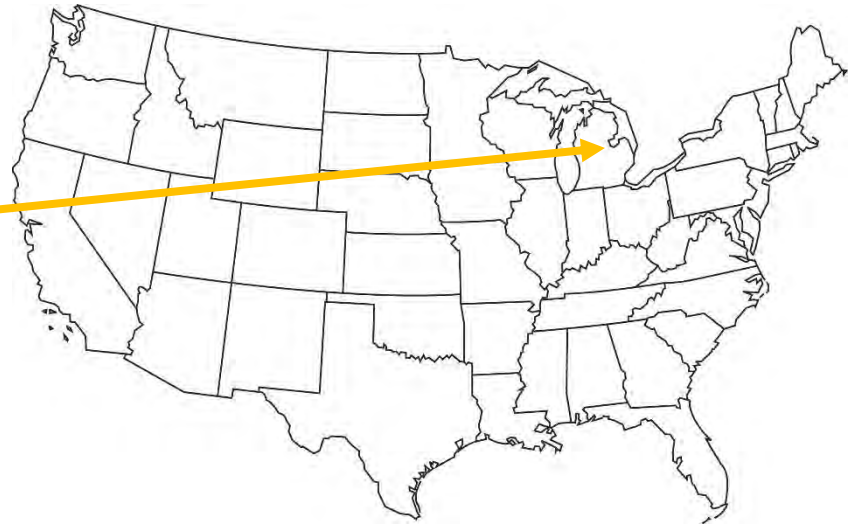
There are two distinct types of single flower heather honey. One is from a single species, Ling Heather (*Calluna vulgaris*), a true heather, and the other type is from any of the *Erica* species. Ling Heather is considered true “Heather Honey” and is a low growing evergreen native of Europe with a liking for dry acidic soils. It is also found on the moors of England and Scotland.



Knapweed

Michigan

Centaurea nigra



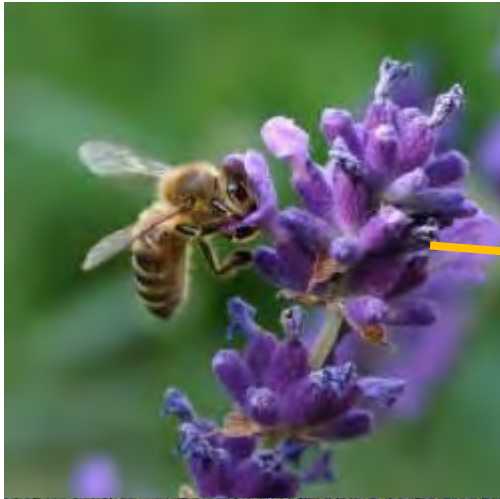
An invasive weed introduced to the United States in the late 1800's. Various species grow across the country. In Michigan it is frequently referred to as 'Star Thistle'. A Russian variety in Colorado is listed as a serious invading pest.



Lavender

Southern France

Lavandula



Lavender grows in profusion in several areas of southern Europe. The most highly prized lavender comes from Provence in southern France.



Mesquite

Mexico

Prosopis glandulosa



Mesquite is common in the American Southwest and Mexico.

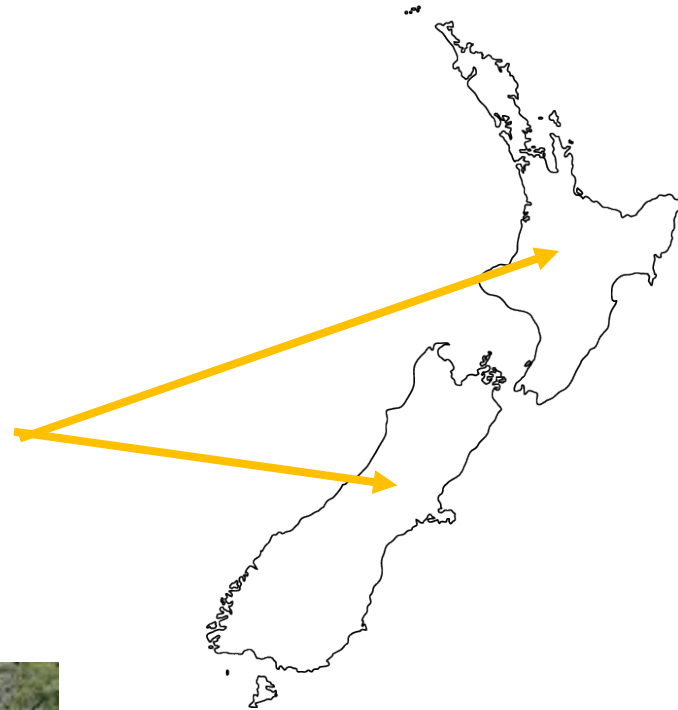
Another variety of mesquite *Prosopis pallida*, is known as Hawaiian Kiawe, found predominantly on the Big Island of Hawaii.



Manuka

New Zealand

Leptospermum scoparium



Manuka, from the Maori language, also called the Tea Tree is native to Australia and spread to New Zealand.



Meadowfoam

Southern Oregon

Limnanthes alba



Native to the west coast, the tiny flower is naturally found around vernal pools each spring. Now it is planted for its oil that is widely used for cosmetic purposes.



Lehua

Big Island Hawaii

Metrosideros polymorpha



From the Hawaii Volcanoes National Park Brochure:

In recent years, the Ōhi'a Tree has been disappearing. Rapid 'Ōhi'a Death (ROD) is newly identified fungal disease currently attacking and killing 'ōhi'a on Hawai'i Island. This fungus clogs the tree's vascular system, depriving the canopy of water, and may kill 'ōhi'a very quickly. 'Ōhi'a is the keystone species in Hawaiian forests, and ROD has the potential to cause major ecosystem disturbances that will negatively impact watersheds, cultural traditions, natural resources, and quality of life.



Longan

Thailand, China

Dimocarpus longan



Longan, a native of Southeast Asia, is a member of the soapberry family. Longan is literally ‘dragon eye’ in Cantonese. when the fruit is peeled it resembles an eyeball.



Lychee

Thailand, Madagascar

Litchi chinensis



© TopTropicals.com



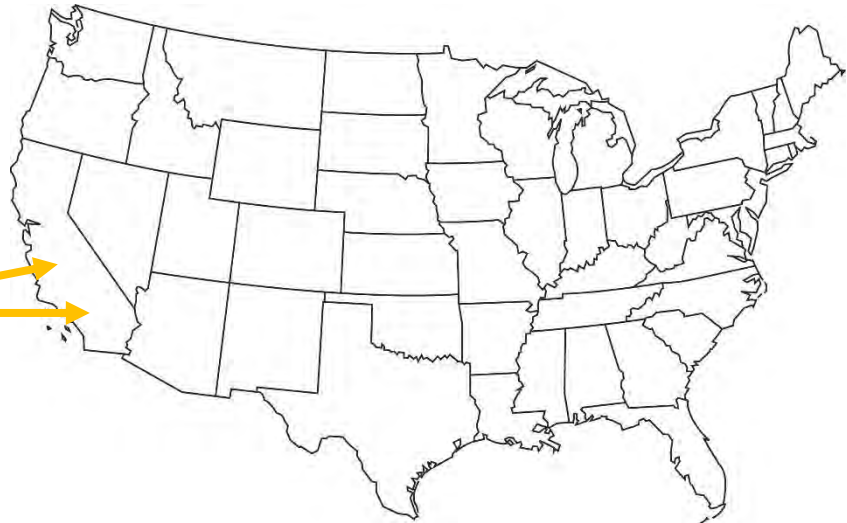
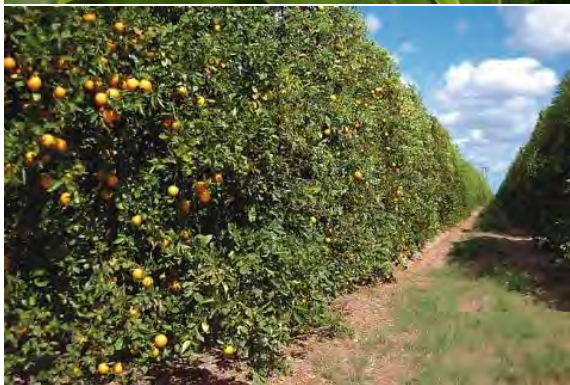
Lychee, native to Southeast Asia, is an evergreen tree of the soapberry family (Sapindaceae), grown for its edible fruit.



Orange Blossom

Central and Southern California

Citrus spp.



May include nectar collected from oranges, lemons, limes and grapefruit. The correct name should be Citrus Honey.

Also collected in Florida, Italy, Spain, Southern France, Israel and other Mediterranean climate areas.



Pomegranate

Southern California

Punica granatum





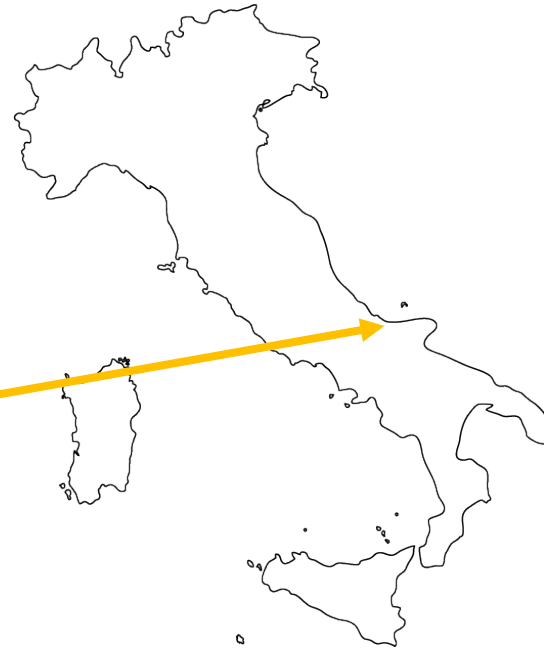
Rosemary

Italy

Rosemarinus officinalis L.



(c) Kathy Kautley Garvey



Rosemary honey is found throughout France, Spain, Italy and Hungary. It is known for its fresh floral and delicate scent and flavor.



Sage

Central Coast California

Salvia mellifera

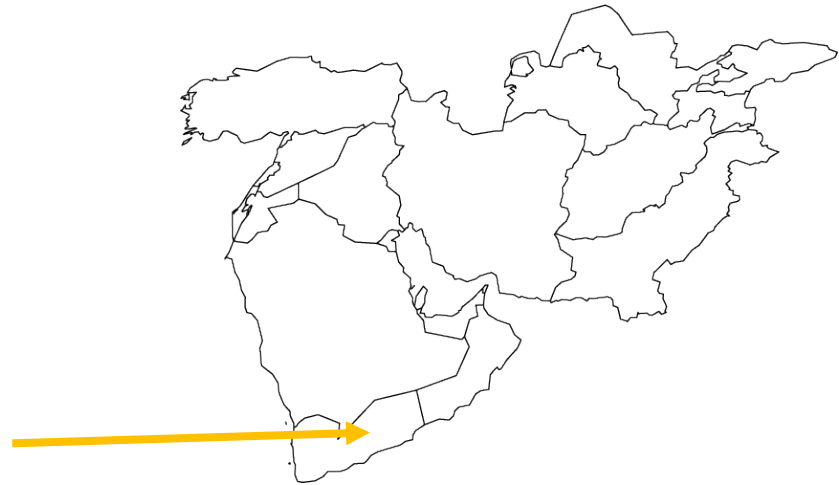




Sidr

Yemen

Ziziphus spina christi



The SIDR tree is known by a lot of different names, the most common is Jujube.

Probably the most costly honey in the world, Saudi princes are known to pay over \$150 per pound!



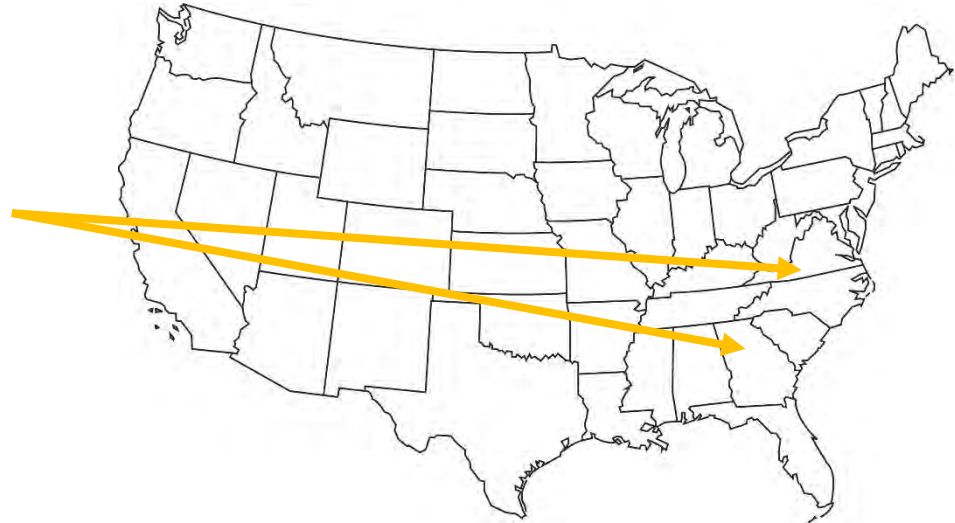
Sourwood

Appalachia Mountain Regions

Oxydendrum arboreum



© 2003 Floridata.com



Sourwood is native to eastern North America but is most common in the southern part of the Appalachian Mountains. It is renowned for its honey. The shoots were used by the Cherokee and Catwba to make arrowshafts.



Sweet Clover

Montana, Dakotas

Melilotus officinalis alba



Sweet clover was brought to the United States as early as 1664 as a forage crop. Since then it has spread throughout the US and to all but 2 Canadian Provinces. In some areas it is referred to as an invasive weed.



Sweet Chestnut

France and Italy

Castanea sativa



The Sweet Chestnut Tree native to the Mediterranean, is not the same as the common Chestnut native to the east coast of the United States. Chestnut honey is found in Spain, Portugal, France, Italy, Greece and Turkey. Some Sweet Chestnuts have been planted in California.



Thyme

Italy

Thymus vulgaris



Thyme grows throughout the rocky Mediterranean countries of Spain, France and Italy. Garrique, a rocky soil in France, is often the name given to the honey of that area and includes thyme, lavender and rosemary.



Toyon

Sierra Foothills and Coastal California

Heteromeles arbutifolia



Toyon, native to southern Oregon and California, is part of the coastal sage scrub and chaparral plant communities. Rarely growing more than 15 feet tall, the bush features lovely white flowers that attract pollinators and produce a small red berry, traditionally used in Native American remedies.



Tupelo

Northern Florida and Southern Georgia

Nyssaceae



Beekeepers place their hives on piers in the swampy terrain of the Apalachicola Riverbed. This rare and sought after honey does not crystallize.



Vetch

Capay Valley, Northern California

Vicia americana

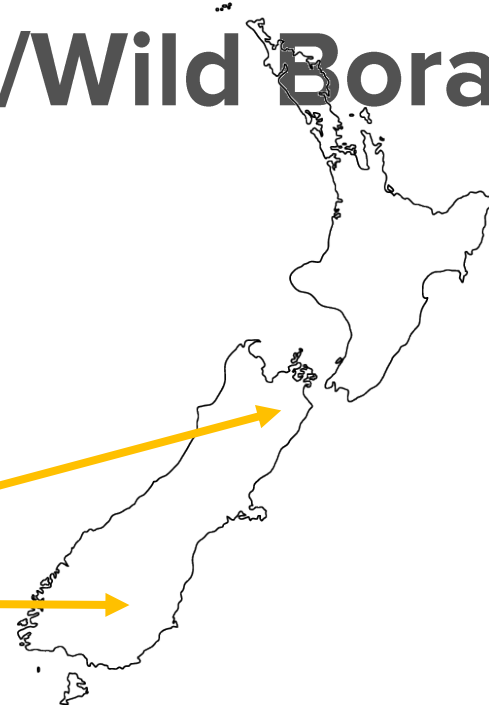




Viper's Bugloss/Wild Borage

New Zealand

Echium vulgare



Echium vulgare, a member of the borage family, is native to most of Eurasia. Now it is found in profusion in New Zealand and throughout much of North America.



Northern California Wildflower



Every Wildflower Honey has a unique presentation depending on the time of year it is collected reflecting a myriad of floral sources and weather. Color, aroma and texture will also vary.



Yellow Star Thistle

Northern California

Centaurea solstitialis



Yellow Star Thistle is an invasive weed, native to the Mediterranean basin. Introduced in the mid-19th century it is known as a major source of nectar and pollen for many pollinators. Simultaneously, it also limits natural plant diversity and is toxic to horses.



Many of the photographs in this collection are from Kathy Keatley Garvey, a Communications Specialist and award winning photographer in the Department of Entomology and Nematology, UC Davis.

Others have been found predominantly on Wikipedia. Unfortunately, I am not able to cite each of the wonderful photographers.

Amina Harris